



eternal

**PUMP-ACTION SHOTGUN
OWNER'S MANUAL**



FOR MODELS

- * GLADIATOR**
- * COMBAT**
- * PARS**



**READ AND UNDERSTAND ALL OF THE
CAUTIONS AND PROPER HANDLING
PROCEDURES AND INSTRUCTIONS OUTLINED
IN THIS BOOKLET BEFORE USING YOUR NEW
FIREARM.**

Thank you for buying an Eternal pump-action shotgun, and welcome to the family.

We believe that safe firearms handling is the most important consideration of anyone who uses firearms and ammunition. Please take a few minutes to thoroughly read and understand this instruction manual included with this shotgun.

You should completely understand this manual before you practice loading, unloading and firing with live ammunition.



REMEMBER, FIREARMS SAFETY DOES DEPEND ON YOU!

Always keep this manual with your firearm. Make sure you understand all the warnings, operation instructions and safety procedures. When you lend, give or sell the firearm, be sure this manual goes with it.

The below Commandments of Firearm Safety should be etched in your memory forever. Let them govern your action wherever and whenever you're involved with firearms in the field, on the range, or in your home. Please take the time to review and understand these rules.

1. Always keep the muzzle pointed in a safe direction. Watch the muzzle at all time, never point a gun, accidentally or intentionally, at any person or anything you do not intend to shoot. Identify the target before shooting.
2. Always treat gun as if it is loaded – it may be!
3. Keep your finger off the trigger while operating the action and at all other times until you are ready to shoot.
4. Keep the safety “on” or in the “safe” position at all times until you're ready to fire. Do not rely on your gun's safety, the safety on any gun is a mechanical device and is not intended as a substitute for common sense or safe gun handling.
5. Learn how your gun functions and handles. If you do not thoroughly understand the proper use and care of your gun, seek the advice of someone who is knowledgeable
6. Do not alter or modify any part of the firearm.
7. Store guns unloaded, separate from any ammunition, and out of the reach of children
8. Be sure the barrel is clear of any obstructions before loading. Make it a habit to check the barrel every time before loading.



9. Be sure you have and use the proper ammunition. A 20 gauge shell will enter a 12 gauge chamber far enough so that a 12 gauge shell can be loaded behind it. Also, a 3" shell may fit into 2 3/4 "chamber, but the crimp at the mouth of the shell will unfold into the forcing cone. If either of these things occurs and you fire the gun, the gun will explode, damaging the gun and possibly causing serious injury or death to you and those around you.

10. Wear protective shooting glasses and adequate ear protection when shooting.

11. Never climb or jump over anything, such as a tree, fence with a loaded gun.

Open the barrel, remove the shells and hand the gun to someone else or place it on the ground on the other side of the obstacle before crossing it yourself. Do not lean a gun against a tree or other object; it could fall and possibly discharge.

12. Do not shoot at a hard surface or at water. Bullet and shot can ricochet or bounce off and travel in unpredictable directions with great velocity.

13. Never transport a loaded gun. DO NOT place a loaded gun into a vehicle. The gun should be unloaded and placed into a case when not in use.

14. Never drink alcoholic beverages before or during shooting.



READ AND FULFILL ALL THE WARNINGS

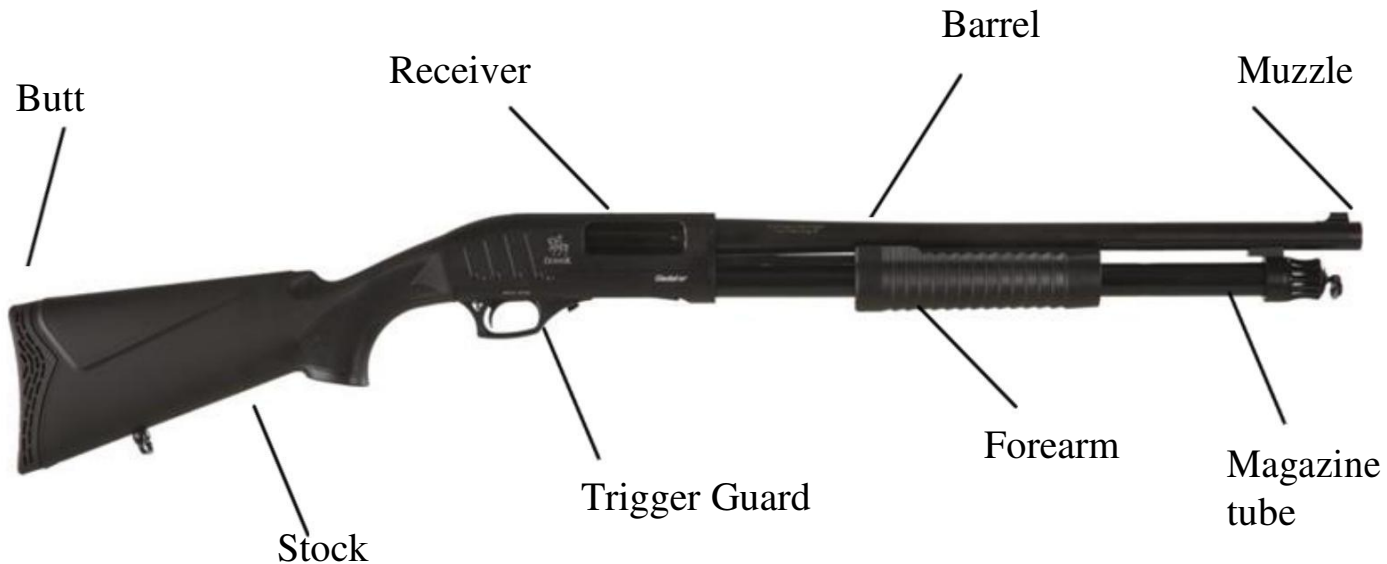
Now that you're a gun owner you have the obligation to help ensure that shooting sports are safe for everyone participants and bystanders alike. You can do that by practicing these principles of firearm safety and passing them on to others especially new shooters. Set an example for beginners. Be a guide to their safe entry into the exciting world of shooting sports. Invest your time and patience for the love of the sport and for its future. After all, it's your love of the sport that led you to buy a new Eternal shotgun.

Firearm ownership is a right and privilege. It's a privilege which carries with it a personal responsibility to use your firearm in a way which will ensure your safety and the safety of others. The preservation of this right and privilege depends on the personal commitment of you and your fellow shooters to the safe and responsible use of firearms. Let the Commandments of Firearm Safety outlined in this book guide you at all times. Teach and promote these rules whenever you can. Remember, firearm safety depends on you! That's the only way to really enjoy your new firearm and to preserve sport shooting as we know it today.



ABOUT YOUR PUMP-ACTION SHOTGUN

Your shotgun is a manually operated pump action. Once a shell has been fired, the locking lug in the bolt moves down, and it is unlocking the gun. The forearm is moved to the rear and forward again, ejecting and loading a new shell. To open the bolt without firing the gun, depress the action bar lock, located just beside and forward of the trigger. This allows for opening the action without dry firing.



SAFETY BUTTON

The safety is designed to stop the trigger mechanism. The safety button is located behind the trigger, and provides protection against accidental or unintentional discharge under normal usage when properly used. To engage the safety, push the button so that it protrudes from the right side of the gun and the RED BAND MARKING CAN NOT BE SEEN. The safety should always be in the “on” or “safe” position until you intend to fire the gun. When you are ready to fire the gun, press the safety button to the “off” position so that the safety protrudes from the left side of the gun and RED BAND MARKING IS SHOWING.

Do not depend on the red color alone to indicate your firearm’s “safety” status. Time, exposure to the elements, and the abrasive action of cleaning agents can erase it. Failure to follow this warning could result in serious injury or death.



“SAFE” Position



“FIRE” Position

ACTION RELEASE CONTROL

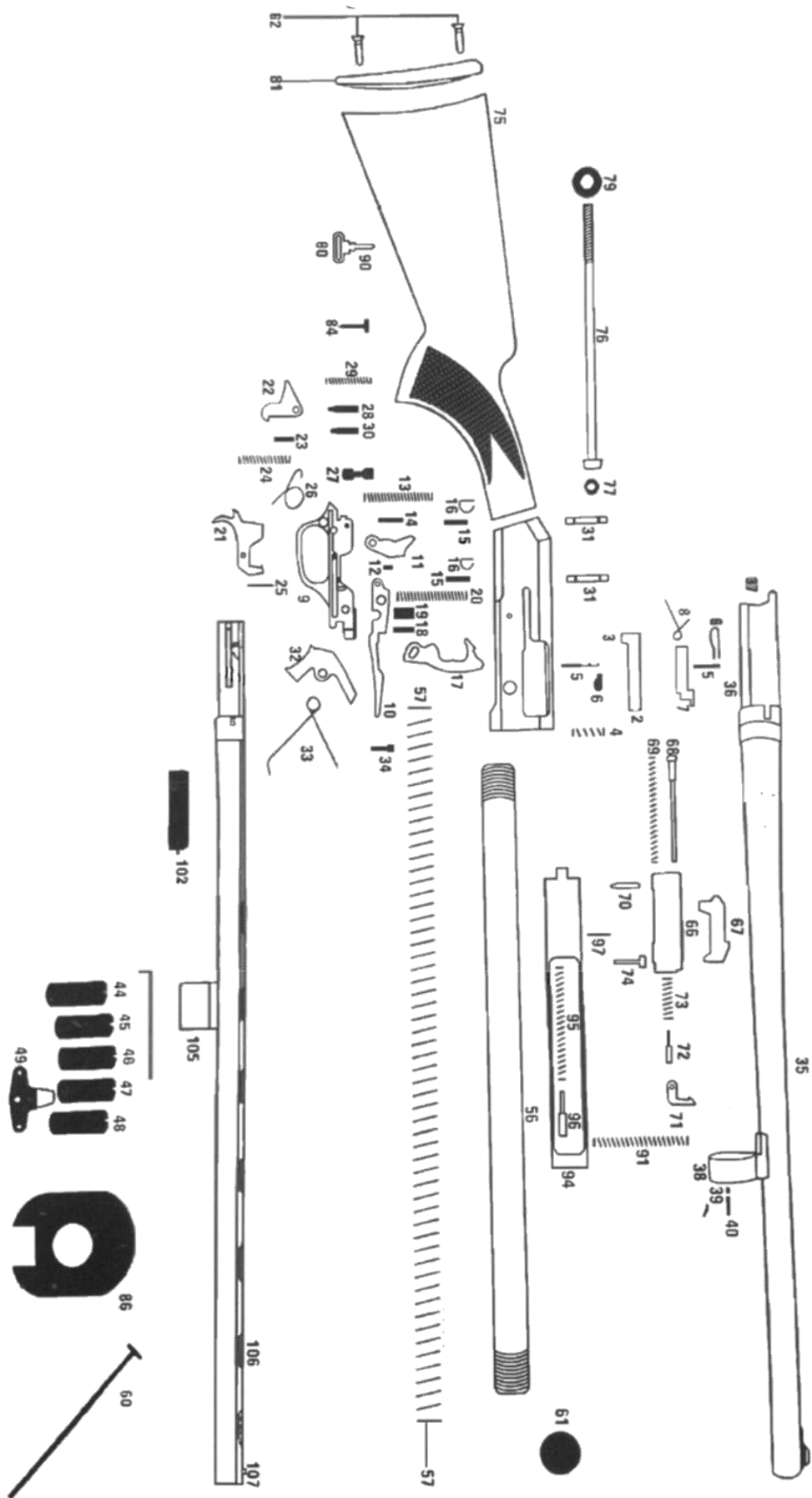
The action lock lever is located on the left side of the trigger housing just rearward of the trigger guard. The action lock lever allows the action to be unlocked and opened for inspection or unloading without pulling the trigger. The action may be opened by depressing the lever and pulling the forearm rearward.

Carrier is pushed into the receiver for loading the shotgun. When the shotgun is loaded, the safety disengaged, and the trigger pulled, shotgun will fire. Magazine Cap is located in front of the forearm and under the barrel. It is screwed (clock-wise) over the magazine tube to keep the forearm and barrel properly in place.



NOTE: During firing, the action unlocks automatically after the hammer falls and the action can be cycled without depressing the action lever.





NOMENCLATURE

Part No	Description	Part No	Description
1	Receiver	40	Pump ring spring
2	Bolt release latch	41	Mould rear sight
3	Magazine Extractor handle rivet	45	Mobile choke #4
5	Magazine extractor pin	46	Mobile choke #3
7	Magazine handle bolt	47	Mobile choke #2
8	Magazine handle spring	48	Mobile choke #5
9	Trigger body	49	Mobile choke key
10	Carrier	56	Magazine tube
11	Carrier latch	57	Magazine spring
12	Carrier latch handle rivet	59	Magazine follower
13	Carrier latch retainer cartridge spring	60	Magazine tube shorter
14	Carrier latch retainer cartridge	61	Magazine cap
15	Carrier cartridge	66	Breech bolt
16	Carrier cartridge segment	67	Locking block
17	Hammer	68	Firing pin
18	Hammer retainer pin	69	Fire pin spring
19	Hammer release cartridge	70	Fire pin retainer
20	Hammer retainer spring	71	Extractor
21	Trigger	73	Extractor spring bolt
22	Inner safety	74	Extractor retainer pin
23	Inner safety press cartridge	75	Stock
24	Inner safety trigger spring	76	Stock screw
25	Inner safety trigger pin	80	Stock swivel
26	Trigger press spring	81	Butt plate
27	Safety	82	Butt plate screw
28	Safety retainer cartridge	86	Stock spacer
29	Safety spring	91	Forend pin
30	Safety release pin	94	Action bar
31	Trigger set pin	95	Bolt extractor
32	Bolt lock	96	Bolt extractor pin
33	Bolt lock spring	97	Operation pin
34	Bolt lock screw	100	Stock with butt plate
35	Cylinder barrel	101	Trigger set
36	Bearing bolt	102	Breech bolt
37	Cap pin	104	Barrel with rib
38	pump ring	105	Rib
39	pump ring ball	107	Gold rear sight



ASSEMBLY INSTRUCTIONS

Your new pump action shotgun is packed dismounted in its box, with the barrel removed and the forearm still attached to the magazine tube.

WARNING: It is important to follow the exact sequence for assembly steps in order to properly assemble your shotgun always place the “safety” in the “SAFE” position before beginning assembly procedures.

1-Remove the magazine cap. Depress the slide release button and pull the forearm completely to the rear –most position.

2-Hold the stock/receiver in a horizontal position with the ejection port down. Then, with the forearm already in the fully rearward position, push the forearm forward until the rear of the forearm is even with the front of the receiver. In order to introduce the barrel extension into the receiver, the carrier must be lowered. To effectively lower the carrier, the forearm must be moved completely to the rear first. Then, the forearm must be partially moved forward, so that the barrel extension will not bind against the carrier. With the ejection port downward, the bolt will retain the carrier in a position low enough to allow easy insertion of the barrel.

3-Before attaching the barrel, be sure to glance through the bore to be sure it is clear of any obstructions.

4-With the forearm positioned as explained in Step 2, insert the barrel extension into the receiver. Move to barrel rearward, guiding the barrel guide ring over the magazine tube. Be sure the barrel tab aligns with and enters the recess in the front, upper surface of the receiver.

5-Replace the magazine cap and tighten by hand. Assembly is completed.

DISASSEMBLY

WARNING: Before starting disassembly procedures, visually inspect the chamber, feed mechanism and magazine to be absolutely certain the shotgun is completely unloaded. Be certain the safety is in the “SAFE” position. Point the barrel in a safe direction.

To disassemble the shotgun, reverse the above assembly procedure. To disassemble the bolt; slide the bolt and the action bar forward and remove them from the magazine tube-receiver assembly after the barrel is removed. While doing this, be careful since the bolt may fall from the action bar. Therefore keep the bolt up during this operation. Then the bolt can be easily removed from the action bar with your hand.

Migratory Magazine Plug

Migratory magazine plug when assembled decreases the capacity of the shotgun to 2+1 for safety reasons or for the regulations varying from country to country.

PS. Migratory magazine plug is optional. Consult your dealer about your country’s laws regarding use of this.



LOADING

WARNINGS:

1. At all during the loading procedure, be sure the muzzle is pointing in a safe direction.
2. Always keep the safety in the “SAFE” position.
3. Always keep your fingers away from the trigger if you do not intend to fire.
4. Always check the cartridge chamber, magazine tube and receiver to see that the shotgun is not already loaded.

With the slide fully forward, press a shell nose first through the bottom ejection port into the rear of the magazine tube against the magazine spring follower until the rim of the shell slips in front of the cartridge stop. Load additional shells in the same manner until the magazine is full. To load a shell from magazine to chamber, depress the slide release button and cycle the slide. Another shell can then be loaded into the magazine. Test locking of the breechlock by attempting to retract the slide. The slide should not retract.



**SHOTGUN IS NOW LOADED
AND READY TO FIRE.**



FIRING THE SHOTGUN

WARNINGS:

1. When pumping and firing, keep your fingers and other objects away from the path of the bolt since it moves back and forward with considerable force and velocity.
2. Keep the safety „ON“ until you are actually ready to fire and aimed at your safe intended target.
3. You need to pump the shotgun each time you fire to feed the next round from the magazine tube to the cartridge chamber.

With the chamber loaded, all that is necessary to fire the gun is to push the thumb safety forward the “FIRE” position (red warning dot exposed) and pull the trigger. The action of the hammer falling unlocks the slide). Consequently, after firing the gun, it is not necessary to depress the slide release in order to draw the slide rearward. Simply, draw the slide rearward to extract and eject the spent case; push it forward to feed a live round from the magazine to the chamber.



**AFTER SHOOTING, IMMEDIATELY PLACE
THE SAFETY IN THE “SAFE” POSITION.**



UNLOADING





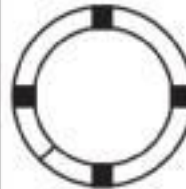
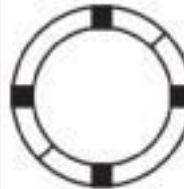
With the safety “SAFE” invert the gun (ejection port up). The forearm should be in the forward position. Reach down inside the ejection port and depress the projection on the cartridge stop. The cartridge stop is located right side of the receiver cavity and when the gun is inverted. Pressing the cartridge stop releases a single shell from the magazine each time it is pressed. Remove all the shells in the magazine. Depress the slide release button and retract the forearm. The loaded round in the chamber will be extracted and ejected as you pull the slide fully rearward. Visually check the chamber, feed mechanism and magazine to be certain that the gun is completely empty.

USAGE OF CHOKE TUBES (Just for the models with supplied with chokes)

There are 5 different screw-in (inner) chokes that can be used on your shotgun.

- 1.F (Full /)
- 2.IM (Improved Modified //)
- 3.M (Modified ///)
- 4.IC (Improved Cylinder ////)
- 5.Cyl-Skeet (Cylinder-Skeet /////)

Extra full choke tubes are also available which are specially designed for turkey hunting.

	SKEET	IC	M	IM	F	XF
CHOKE TUBE						
BBLS	CL	****	***	**	*	XF



Your shotgun is packed with either 3-choke system or 5-choke system. Most common and preferred 3-choke system is F, M, IC chokes. However different combination 3-choke systems are possible depending on the requirements of different countries. 5-choke system contains all the inner chokes being F, IM, M, IC, Cyl-Skeet. Check the number and markings on the chokes to find out the inner choke configuration of your shotgun. All screw-in (inner) chokes have one, two, three, four or five notches, which indicate the type of the screw-in choke, i.e. F choke has one, IM has two, M has three, IC has four and Cyl-Skeet has five notches. Please also check the markings on chokes.

NOTE: M, IC and Cyl-Skeet choke tubes are good for steel shot. F & IM choke tubes are for lead shot only. Extra full choke tubes are for lead shot only

Fixed Cylinder Bore Choke means the choke constriction is pre-machined into the barrel at the factory. No choke adjustments can be made and no interchangeable chokes can be put. 18"/46 cm and 20"/51 cm barrel pump action models are produced with this choke system as standard.

WARNING:

1. Make sure the shotgun is unloaded and the safety "ON" before you assemble/disassemble the chokes.
2. Under safety conditions (cartridge chamber empty, receiver empty, magazine tube empty, safety engaged), check whether the choke worked loose during use. In such a case, the choke must be tightened to the end by means of the choke wrench.

Assembly & disassembly of the inner chokes:

Take one of the inner chokes of your choice. Place it inside barrel and by means of choke wrench; screw (clockwise) it to the end until it is completely tightened. To disassemble, unscrew (counter-clockwise) by means of choke wrench and remove it.



DO NOT FIRE THIS SHOTGUN WITHOUT THE CORRECT CHOKE TUBE INSTALLED. PERMANENT DAMAGE MAY RESULT TO THE THREADS



CARE AND CLEANING

WARNING: Place the safety in the “safe” position and lock the bolt the rear. Be certain your shotgun’s magazine, feed mechanism and chamber are unloaded. Always wear protective safety glasses during all assembly, disassembly and cleaning procedures.

Disassemble, clean and lubricate the shotgun when grease, dirt or powder fouling accumulates in the barrel and action. To avoid rust and corrosion, clean and lubricate after each use.

Materials and equipment necessary for cleaning and lubrication; Cleaning rod, Cotton bore patches, Brass bore brush, Powder solvent, Small soft brush, Good quality shotgun oil.

- After use, to remove any powder and lead residue in the bore, scrub the barrel and chamber using the bore brush with powder solvent. Then swab the bore and the chamber with shotgun oiled cotton patches to protect from rust and corrosion.
- After a high number of shots (about 500 shots), disassemble the bolt assembly and clean it with a soft brush and shotgun oil. Then dry it carefully with a soft cloth and oil the parts lightly.
- Clean the outside of the magazine tube with a shotgun oiled soft cloth and then dry it with a soft cloth and oil the parts lightly.
- Any powder on the chamber, barrel, etc. can be cleaned with a brush and powder solvent.
- All external surfaces should be wiped down with light coat of rust preventative.
- Avoid using too much solvent for bore cleaning, since prolonged contact may damage the finish of the shotgun. Make sure to wipe away all the excess solvent and lubricant.

STORAGE

Clean thoroughly and oil your gun before storage. Store the gun in a case to prevent scratches and dents. Store your shotgun in a dry place to prevent corrosion. Store the gun away from children and in a place where it cannot be obtained by those unauthorized to use it. Always store gun unloaded and separately from any ammunition.



READ AND UNDERSTAND ALL OF THE CAUTIONS AND PROPER HANDLING PROCEDURES OUTLINED IN THIS BOOKLET BEFORE USING YOUR NEW SHOTGUN.

DO NOT, UNDER ANY CIRCUMSTANCES, ALTER THE TRIGGER, SAFETY OR OTHER PARTS OF THE FIRING MECHANISM OF THIS OR ANY OTHER SHOTGUN. FAILURE TO OBEY THIS WARNING MAY RESULT IN INJURY OR DEATH TO YOURSELF OR OTHERS.

IF YOUR SHOTGUN SHOULD REQUIRE SERVICE OR REPAIRS, PLEASE CONTACT YOUR DEALER AT FIRST. FOR OTHER TECHNICAL QUESTIONS ABOUT YOUR SHOTGUN, YOU MAY CONTACT US DIRECTLY;



FACTORY:

**Uzumlu Kasabası , Beysehir
42720 KONYA
TURKEY
doruk@doruksilah.com.tr
www.eternalshotguns.com
www.doruksilah.com.tr**